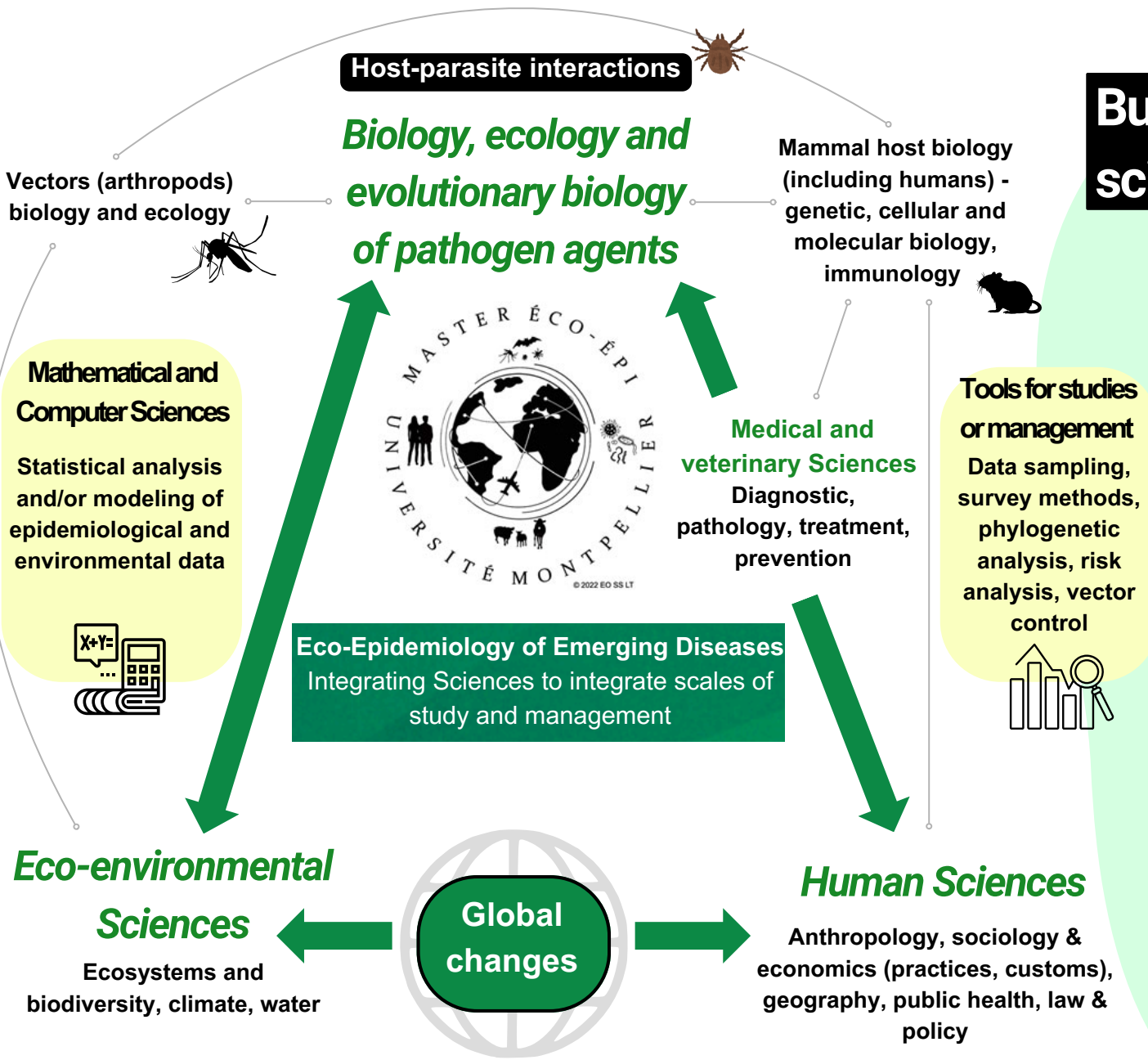




i d i l
INTER-DISCIPLINARY &
IN-LAB GRADUATE PROGRAM
UNIVERSITÉ DE MONTPELLIER

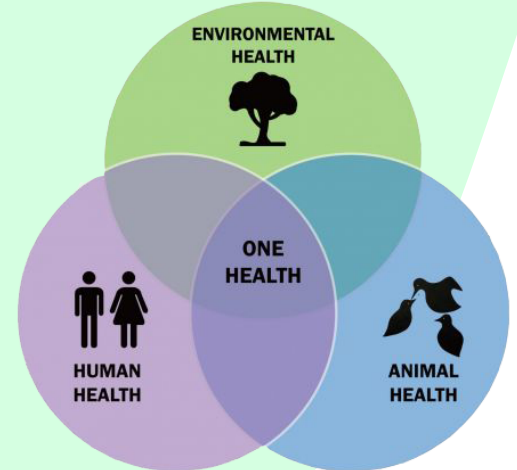
International Master | 100% Taught in English

Eco-Epidemiology of Emerging Infectious Diseases



Built to train the new *One Health* scientific generation

- ✓ Addresses the challenge of emerging infectious and parasitic diseases in human and animal populations
- ✓ Integrates all scientific and relevant approaches from Biology to Human Sciences, within concrete contexts and needs of Public Health
- ✓ Multi-disciplinary to enable at least interdisciplinarity, at best transdisciplinarity



How to Apply

Entry in M1 only - No direct entry to M2

- European (UE) new incoming students
<https://www.monmaster.gouv.fr/>
- Non-European (UE) new incoming students
<https://www.campusfrance.org/en>

Selection criteria

- ✓ **Previous studies:** bachelor's degrees in Life Sciences (all specializations), Life and Earth Sciences, Health Sciences, bi-disciplinary bachelors (as Biology and Humanity), veterinarian or medicine students at cursus end
- ✓ **Quality of previous studies** and mandatory minimum prerequisites (including professional or extra academic experiences) in one of the course's key areas
- ✓ **Consistency between the applied training and the professional project**
- ✓ **English level** : at least B2 (mandatory)



A distance interview may be requested.

Subsides and financial supports for incoming applicants

- ✓ The travel costs to come studying in Montpellier (600 euros).
- ✓ 4 months of scholarship (600 euros per month) per year (one 4-month scholarship in M1 and one 4-month scholarship in M2).
- ✓ Opportunity to discover the French culture (language classes, cultural visits and sightseeing...)
- ✓ M1 and M2 internships are fully subsidized by the University program or the host laboratory.



idil
INTER-DISCIPLINARY &
IN-LAB GRADUATE PROGRAM
UNIVERSITÉ DE MONTPELLIER

More information

- <https://ecoepidemiologie.com/formationinitiale/graduate-school-epied/>
- <https://idil.edu.umontpellier.fr/en/accueil-des-etudiantsinternationaux-2/formalites-pouretudier-a-montpellier/>

EARLY AND LONG-LASTING IMMERSION OF MASTER STUDENTS WITHIN THE RESEARCH WORLD

- 6 months internships, both at M1 and M2 levels - 30 credits/60 per year
- Short “IN LAB” trainings - 2 to 4 Credits /60 Year 1
- Core Teaching Units (see program below), Transversal and Opening Units - 16 to 20 Credits /60 per year
- Personal Project (year 1)/ Multidisciplinary Project (year 2) – 10 credits/60 per year

Master 1

Title	Credits
Pathogens PATH	2
Ecology and Evolution of Microorganisms and Parasitisms (EEMP)	4
Eco-epidemiology of emerging pathogenic diseases : Issues and Challenges (EMIC)	2
Study of variability (EVA)	3
Bioinformatic and Data Base	2

Master 2

Title	Credits
Transmission : case studies	2
Zoonoses	2
Risks, Risk Analysis and Monitoring	2
Machine Learning (Advanced Mathematics)	3
First Option = 1X2 ECTS	2
Vectors	
Water, technologic and therapeutic-born pathogens' threat (W3T)	
Second Option = 1X2 ECTS	2
Spatial Data	
Bayesian Statistics	



Courses taught in English

- Mainly shared with French speaking students
- French as Foreign language courses